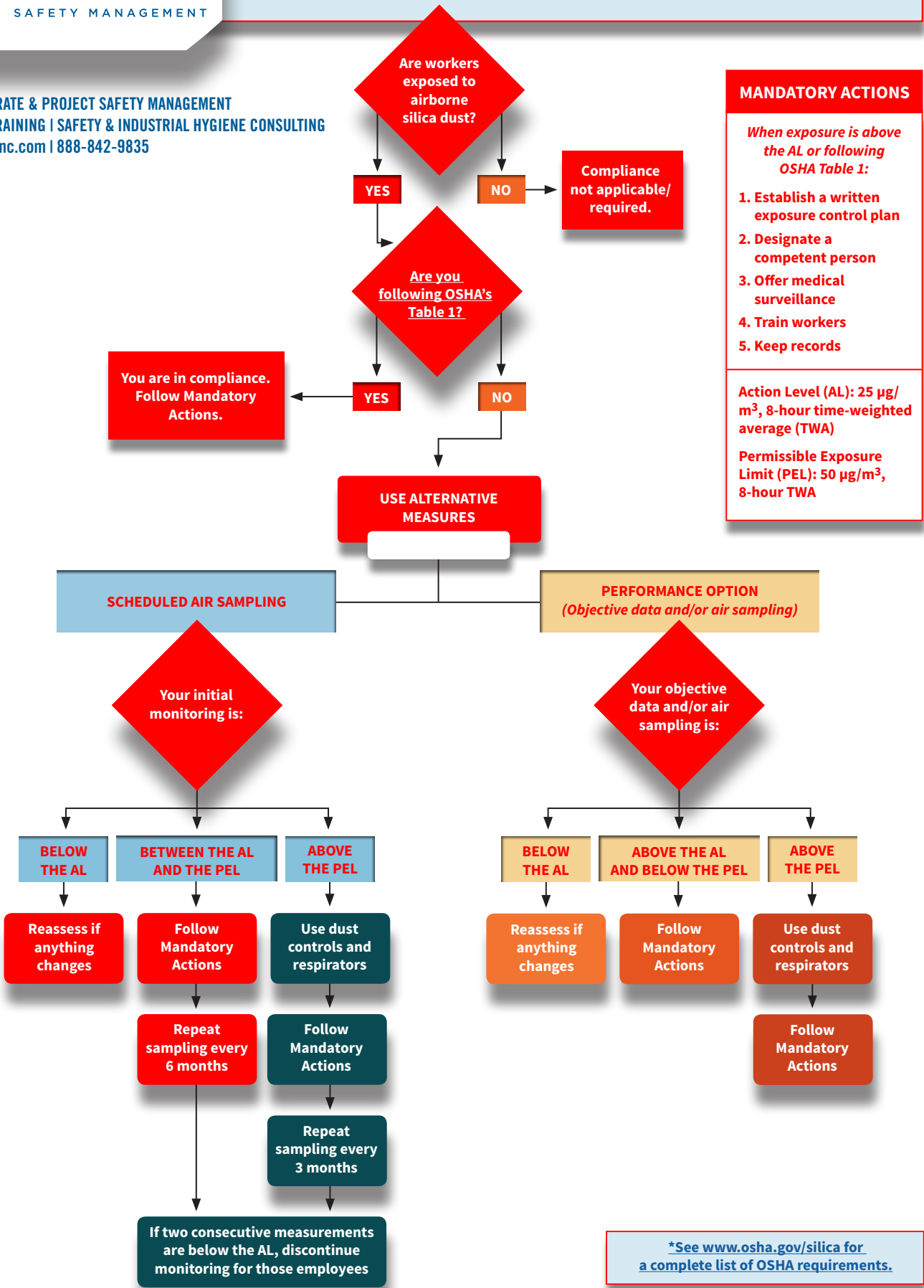


# OSHA'S CONSTRUCTION SILICA STANDARD\*

CORPORATE & PROJECT SAFETY MANAGEMENT  
OSHA TRAINING | SAFETY & INDUSTRIAL HYGIENE CONSULTING  
haztekinc.com | 888-842-9835



**MANDATORY ACTIONS**

*When exposure is above the AL or following OSHA Table 1:*

1. Establish a written exposure control plan
2. Designate a competent person
3. Offer medical surveillance
4. Train workers
5. Keep records

Action Level (AL): 25 µg/m<sup>3</sup>, 8-hour time-weighted average (TWA)

Permissible Exposure Limit (PEL): 50 µg/m<sup>3</sup>, 8-hour TWA

\*See [www.osha.gov/silica](http://www.osha.gov/silica) for a complete list of OSHA requirements.