



HAZTEK
INC.

HAZTEK
SAFETY MANAGEMENT

OSHA's New Silica Rule Standards Are Affecting Your Industry

Exposure to respirable crystalline silica can cause lung cancer, silicosis, chronic obstructive pulmonary disease, and kidney disease.

America's workers are being exposed to crystalline silica dust in common workplace operations involving cutting, sawing, drilling, and crushing of concrete, brick, block, rock, and stone products (such as construction tasks), and operations using sand products (such as in glass manufacturing, foundries, sand blasting, and hydraulic fracturing). **OSHA has issued a final rule that limits exposure**, in an effort to reduce the effects of respirable silica. The rule is comprised of two standards, one for Construction and one for General Industry and Maritime.

Source: OSHA / U.S. Dept. of Labor



THE NEW RULE REQUIRES:

HAZTEK INC.

HAZTEK
SAFETY MANAGEMENT

HAZTEK PROVIDES SOLUTIONS

Exposure Monitoring at the action level of 25 $\mu\text{g}/\text{m}^3$. The new PEL of 50 $\mu\text{g}/\text{m}^3$ is now 5 times lower for Construction and 2 times lower for General Industry. [C*] [G/M]

SILICA EXPOSURE SAMPLING
TESTING FOR RESPIRABLE DUST

Provide respirators to workers when dust controls cannot limit exposures to the PEL. [C*] [G/M]

RESPIRATOR FIT TESTING
RESPIRATORY PROTECTION TRAINING

Establish and implement a written exposure control plan that identifies exposure and protection methods. [C] [G/M]

EXPOSURE CONTROL ASSESSMENTS
WRITTEN EXPOSURE CONTROL PLANS

Designate a competent person to implement the written exposure control plan. [C]

TRAINING FOR COMPETENT PERSONS IN SILICA

Chest X-rays and lung function tests for workers who may wear a respirator for 30 or more days per year. [C] [G/M]

RESPIRATORY PROTECTION PROGRAMS

Train workers on work operations that result in silica exposure and ways to limit exposure. [C] [G/M]

WORKER TRAINING ON EXPOSURE CONTROL METHODS

Keep records of workers' silica exposure and medical exams. [C] [G/M]

WRITTEN RECORDKEEPING PROGRAMS FOR
INDUSTRIAL HYGIENE AND MEDICAL SURVEILLANCE

[C] = Construction [G/M] = General Industry / Maritime

*Must be implemented if employer does not use exposure control methods

See www.osha.gov/silica for complete list of OSHA Standards

888.8HAZTEK | 888-842-9835
haztekinc.com | info@haztekinc.com



WHO IS AFFECTED BY OSHA'S NEW STANDARDS?

About 2.3 million workers are exposed to respirable crystalline silica in their workplaces, including 2 million construction workers who cut, drill, crush, or grind silica-containing materials such as concrete and stone. About 295,000 general industry and maritime workers in over 75,000 workplaces are being exposed in such operations as brick manufacturing, foundries, and hydraulic fracturing.

Industries (including):

- Construction
- Glass Manufacturing
- Pottery Products
- Structural Clay Products
- Concrete Products
- Foundries
- Paintings and Coatings
- Refractory Products
- Ready-Mix Concrete
- Cut Stone and Stone Products
- Abrasive Blasting
- Refractory Furnace Installation and Repair
- Railroad Transportation
- Oil and Gas Operation

Number of Workers Exposed to Respirable Crystalline Silica in Selected General Industry/ Maritime Sectors

Industry sector	Workers currently exposed	Workers currently exposed above the new PEL
Asphalt Roofing Materials	3,158	1,410
Concrete Products	32,981	9,391
Cut Stone	9,429	5,243
Dental Laboratories	31,105	864
Foundries	34,591	12,173
Jewelry	6,772	2,434
Porcelain Enameling	4,113	1,654
Pottery	6,269	2,496
Railroads	16,895	5,340
Ready-Mix Concrete	27,123	19,941
Shipyards	3,038	2,228
Structural Clay Products	7,893	3,198
Support Activities for Oil and Gas Operations	16,960	11,207

Source: OSHA Directorate of Standards and Guidance

OSHA estimates that over 100,000 workers in general industry and maritime are exposed to silica levels that exceed the new permissible exposure limit (PEL).



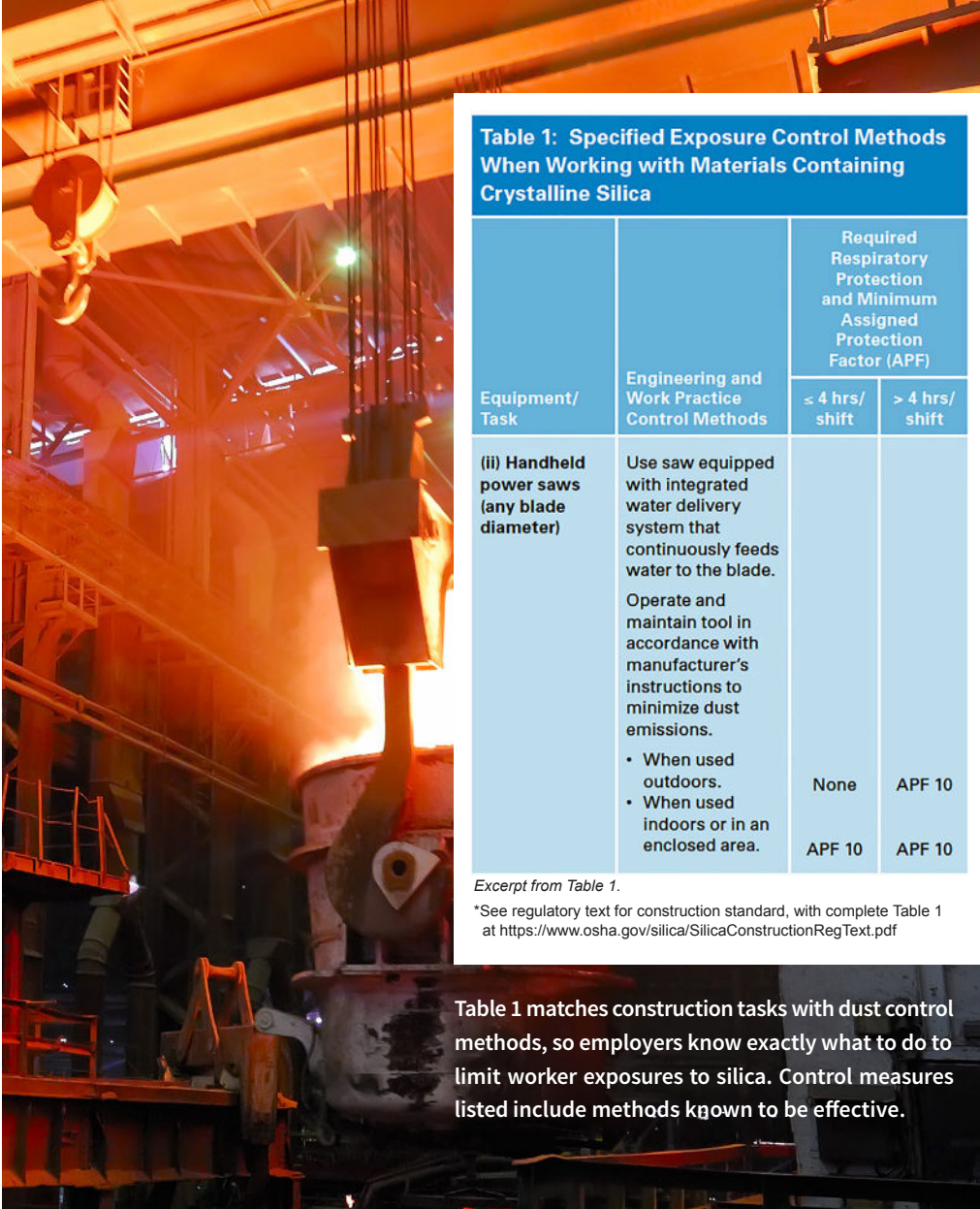


Table 1: Specified Exposure Control Methods When Working with Materials Containing Crystalline Silica

Equipment/ Task	Engineering and Work Practice Control Methods	Required Respiratory Protection and Minimum Assigned Protection Factor (APF)	
		≤ 4 hrs/ shift	> 4 hrs/ shift
(ii) Handheld power saws (any blade diameter)	<p>Use saw equipped with integrated water delivery system that continuously feeds water to the blade.</p> <p>Operate and maintain tool in accordance with manufacturer's instructions to minimize dust emissions.</p> <ul style="list-style-type: none"> When used outdoors. When used indoors or in an enclosed area. 	None	APF 10
		APF 10	APF 10

Excerpt from Table 1.
 *See regulatory text for construction standard, with complete Table 1 at <https://www.osha.gov/silica/SilicaConstructionRegText.pdf>

Table 1 matches construction tasks with dust control methods, so employers know exactly what to do to limit worker exposures to silica. Control measures listed include methods known to be effective.

FINAL RULE TOOK EFFECT: JUNE 23, 2016

Both standards contained in the final rule took effect on June 23, 2016. Industries have one to five years to comply with most requirements, based on the following schedule:

COMPLIANCE SCHEDULE

CONSTRUCTION: SEPTEMBER 23, 2017

GENERAL INDUSTRY: JUNE 23, 2018

MARITIME: JUNE 23, 2018

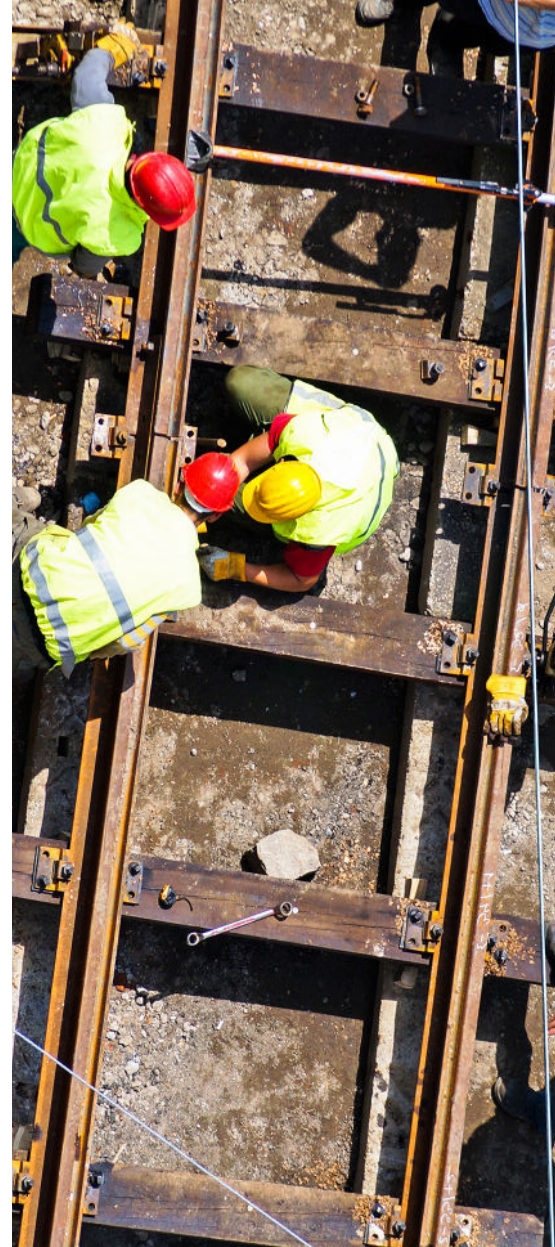
HYDRAULIC FRACTURING: JUNE 23, 2018

Two years after the effective date for all provisions except Engineering Controls, which have a compliance date of June 23, 2021.

HOW HAZTEK CAN HELP

With over 150 different services and training courses for Construction, General Industry, and Maritime – and over 140 full-time safety professionals and industry experts – HazTek is a leader in workplace safety. We bring extensive experience and in-depth knowledge of silica exposure protection, so our fully-customizable assessments, services, and results will align to your needs and OSHA standards.

Contact HazTek Safety Management to help you to protect your people, your property, the environment, and your bottom line. 888-842-9835 or info@haztekinc.com.





**WE ARE TRUSTED FOR OUR RESPONSIVENESS, QUALITY
OF SERVICES, AND OUR EFFECTIVENESS IN KEEPING
WORKERS SAFE TODAY AND HERE TOMORROW.**



**PROJECT SAFETY MANAGEMENT | SAFETY & OSHA TRAINING
SAFETY CONSULTING | CORPORATE SAFETY MANAGEMENT
www.haztekinc.com | 888-842-9835 | info@haztekinc.com**

**HAZTEK
INC.**



HAZTEK
SAFETY MANAGEMENT